



**Your safety,
our priority.**



Concept, Design, Product Visualization
GM Modular Pvt, Ltd.

Printing
Mumbai, India.

Possible colour variations in product
images in the catalogue.

We reserve the right to make technical changes to the products
as well as amendments to the content of this document at any
time without prior notice. The agreed properties are definitive
for any orders placed.

GM Modular Pvt. Ltd. shall not be liable for any consequences
arising from errors or incomplete information in this document.
We reserve all rights in this document and in the subject matter
and illustrations contained therein.

Copyright © 2018 GM

All rights reserved.



PRICE List#Edition July 2021



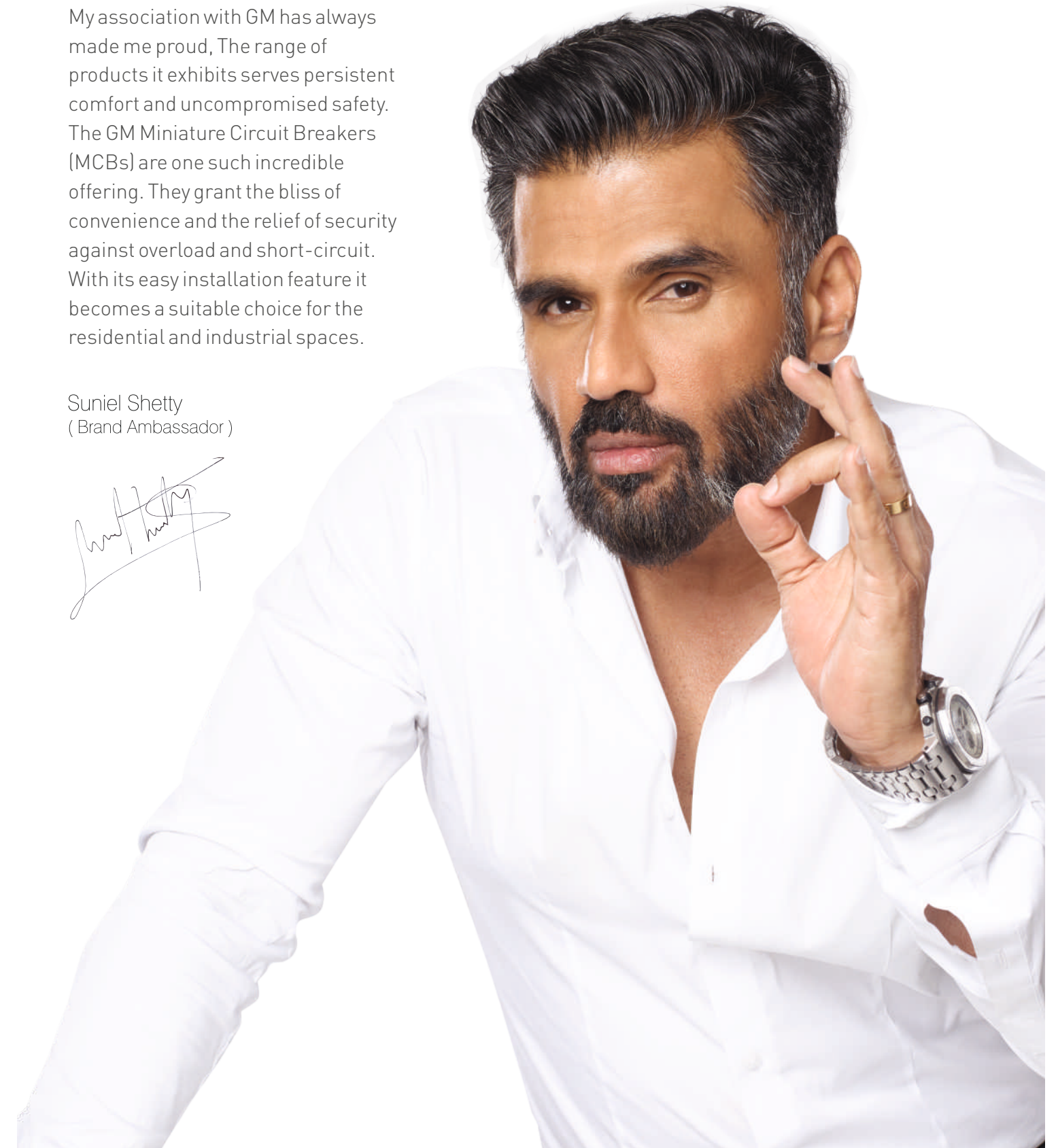
LV SWITCHGEAR &
PROTECTION DEVICES



Delivering the promise of safety and exemplifying reliability in unreliable times.

My association with GM has always made me proud, The range of products it exhibits serves persistent comfort and uncompromised safety. The GM Miniature Circuit Breakers (MCBs) are one such incredible offering. They grant the bliss of convenience and the relief of security against overload and short-circuit. With its easy installation feature it becomes a suitable choice for the residential and industrial spaces.

Suniel Shetty
(Brand Ambassador)



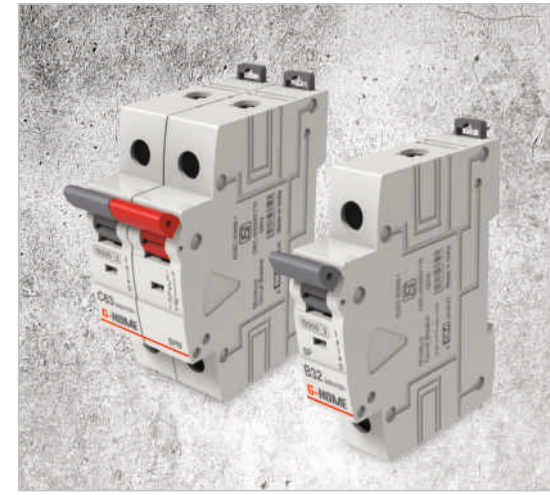
Content

01



G-VAULT MCBs

17



G-HOME MCBs

05



G-VAULT DBs

22



G-HOME DBs

07



G-LINC

24



OUR EXPERIENCE CENTRES

Built to perfection and designed to ensure efficiency and protection providing uncompromising safety.

GM Distribution Boards (DBs) blend aesthetics, functionality and safety together. They are manufactured with high precision and supreme quality metal sheets that ensure anti-rust conditioning. GM Miniature Circuit Breakers (MCBs) protect installations against overload and short-circuits assuring reliability. Made from the best raw materials & advanced technology RCCBs are the safest device to detect and trip against electrical leakage current, thus ensures protection against electric shock caused by indirect contacts.

G-VAULT | **G-LINE** | **G-HOME**



MCBs, DBs & Switchgears



Complete safety of your loved ones.

MCBs & DBs

The MCBs protect installations against overload and short-circuits ensuring reliability and operational security. The RCCBs provide protection from risks of electrical shocks, electrocution and fires that are caused due to faulty wiring or earth faults and prevent unnecessary mishaps. Moreover, with its advanced safety features it grants comfort and a sense of relief.



MCB

CODE	HSN CODE	ITEM	MRP ₹	STD./ MST. PKG.
SINGLE POLE (SP) 'B' TYPE				
GM V SB 06	8536	MCB 6A SP B	215.00	12/144
GM V SB 10	8536	MCB 10A SP B	215.00	12/144
GM V SB 16	8536	MCB 16A SP B	215.00	12/144
GM V SB 20	8536	MCB 20A SP B	215.00	12/144
GM V SB 25	8536	MCB 25A SP B	215.00	12/144
GM V SB 32	8536	MCB 32A SP B	215.00	12/144
MCB 'SP' 'B' Curve Series 6A-32A In accordance with IS/IEC 60898-1, 240/415V, AC, 50Hz, 10kA, Suitable for all domestic loads, Motor and other inductive loads.				



MCB

CODE	HSN CODE	ITEM	MRP ₹	STD./ MST. PKG.
SINGLE POLE (SP) 'C' TYPE				
GM V SC 06	8536	MCB 6A SP C	215.00	12/144
GM V SC 10	8536	MCB 10A SP C	215.00	12/144
GM V SC 16	8536	MCB 16A SP C	215.00	12/144
GM V SC 20	8536	MCB 20A SP C	215.00	12/144
GM V SC 25	8536	MCB 25A SP C	215.00	12/144
GM V SC 32	8536	MCB 32A SP C	215.00	12/144
GM V SC 40	8536	MCB 40A SP C	429.00	12/144
GM V SC 63	8536	MCB 63A SP C	495.00	12/144
MCB 'SP' 'C' Curve Series 6A - 63A In accordance with IS/IEC 60898-1, 240/415V, AC, 50Hz, 10kA, Suitable for all domestic loads, Motor and other inductive loads.				



MCB

CODE	HSN CODE	ITEM	MRP ₹	STD./ MST. PKG.
SINGLE POLE WITH NEUTRAL (SPN) 'C' TYPE				
GM V NC 06	8536	MCB 6A SPN C	554.00	6/72
GM V NC 10	8536	MCB 10A SPN C	554.00	6/72
GM V NC 16	8536	MCB 16A SPN C	554.00	6/72
GM V NC 20	8536	MCB 20A SPN C	554.00	6/72
GM V NC 25	8536	MCB 25A SPN C	554.00	6/72
GM V NC 32	8536	MCB 32A SPN C	554.00	6/72
GM V NC 40	8536	MCB 40A SPN C	743.00	6/72
GM V NC 63	8536	MCB 63A SPN C	873.00	6/72
MCB 'SPN' 'C' Curve Series 6A - 63A In accordance with IS/IEC 60898-1, 240/415V, AC, 50Hz, 10kA, Suitable for all domestic loads, Motor and other inductive loads.				

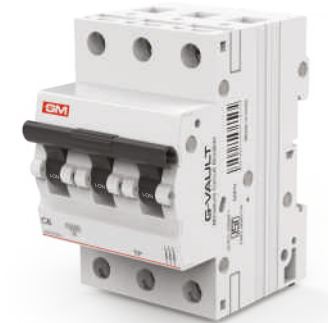


MCB

CODE	HSN CODE	ITEM	MRP ₹	STD./ MST. PKG.
DOUBLE POLE (DP) 'C' TYPE				
GM V DC 06	8536	MCB 6A DP C	600.00	6/72
GM V DC 10	8536	MCB 10A DP C	600.00	6/72
GM V DC 16	8536	MCB 16A DP C	600.00	6/72
GM V DC 20	8536	MCB 20A DP C	600.00	6/72
GM V DC 25	8536	MCB 25A DP C	600.00	6/72
GM V DC 32	8536	MCB 32A DP C	600.00	6/72
GM V DC 40	8536	MCB 40A DP C	824.00	6/72
GM V DC 63	8536	MCB 63A DP C	989.00	6/72
MCB 'DP' 'C' Curve Series 6A - 63A In accordance with IS/IEC 60898-1, 240/415V, AC, 50Hz, 10kA, Suitable for all domestic loads, Motor and other inductive loads.				

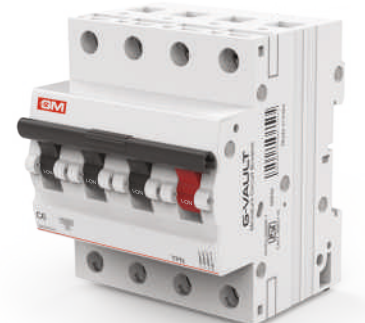
CODE	HSN CODE	ITEM	MRP ₹	STD./ MST. PKG.
TRIPLE POLE (TP) 'C' TYPE				
GM V TC 06	8536	MCB 6A TP C	924.00	4/48
GM V TC 10	8536	MCB 10A TP C	924.00	4/48
GM V TC 16	8536	MCB 16A TP C	924.00	4/48
GM V TC 20	8536	MCB 20A TP C	924.00	4/48
GM V TC 25	8536	MCB 25A TP C	924.00	4/48
GM V TC 32	8536	MCB 32A TP C	924.00	4/48
GM V TC 40	8536	MCB 40A TP C	1078.00	4/48
GM V TC 50	8536	MCB 50A TP C	1364.00	4/48
GM V TC 63	8536	MCB 63A TP C	1529.00	4/48
MCB 'TP' 'C' Curve Series 6A - 63A In accordance with IS/IEC 60898-1, 240/415V, AC, 50Hz, 10kA, Suitable for all domestic loads, Motor and other inductive loads.				

MCB



CODE	HSN CODE	ITEM	MRP ₹	STD./ MST. PKG.
TRIPLE POLE WITH NEUTRAL (TPN) 'C' TYPE				
GM V RC 06	8536	MCB 6A TPN C	1249.00	3/36
GM V RC 10	8536	MCB 10A TPN C	1249.00	3/36
GM V RC 16	8536	MCB 16A TPN C	1249.00	3/36
GM V RC 20	8536	MCB 20A TPN C	1249.00	3/36
GM V RC 25	8536	MCB 25A TPN C	1249.00	3/36
GM V RC 32	8536	MCB 32A TPN C	1249.00	3/36
GM V RC 40	8536	MCB 40A TPN C	1639.00	3/36
GM V RC 63	8536	MCB 63A TPN C	1832.00	3/36
MCB 'TPN' 'C' Curve Series 6A - 63A In accordance with IS/IEC 60898-1, 240/415V, AC, 50Hz, 10kA, Suitable for all domestic loads, Motor and other inductive loads.				

MCB



CODE	HSN CODE	ITEM	MRP ₹	STD./ MST. PKG.
FOUR POLE (FP) 'C' TYPE				
GM V FC 06	8536	MCB 6A FP C	1326.00	3/36
GM V FC 10	8536	MCB 10A FP C	1326.00	3/36
GM V FC 16	8536	MCB 16A FP C	1326.00	3/36
GM V FC 20	8536	MCB 20A FP C	1326.00	3/36
GM V FC 25	8536	MCB 25A FP C	1326.00	3/36
GM V FC 32	8536	MCB 32A FP C	1326.00	3/36
GM V FC 40	8536	MCB 40A FP C	1485.00	3/36
GM V FC 50	8536	MCB 50A FP C	1749.00	3/36
GM V FC 63	8536	MCB 63A FP C	1936.00	3/36
MCB 'FP' 'C' Curve Series 6A - 63A In accordance with IS/IEC 60898-1, 240/415V, AC, 50Hz, 10kA, Suitable for all domestic loads, Motor and other inductive loads.				

MCB

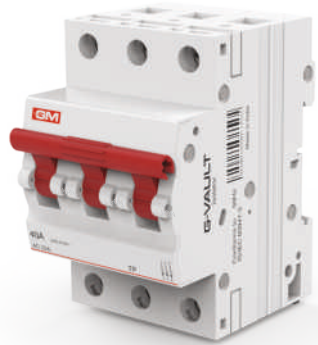




ISOLATOR

CODE	HSN CODE	ITEM	MRP ₹	STD./ MST. PKG.
DOUBLE POLE (DP)				
GM V ID 40	8536	ISO 40A DP	468.00	6/72
GM V ID 63	8536	ISO 63A DP	578.00	6/72
GM V ID 100	8536	ISO 100A DP	803.00	6/72

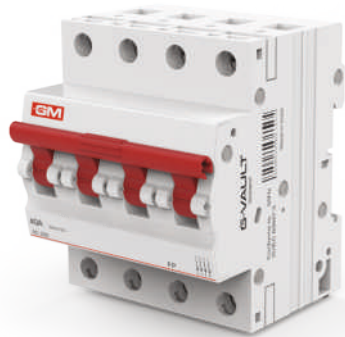
Isolator 'DP' 40A -100A.
Utilization category AC 22A.
Switching device - Disconnectors to make, carry & break circuit current



ISOLATOR

CODE	HSN CODE	ITEM	MRP ₹	STD./ MST. PKG.
TRIPLE POLE (TP)				
GM V IT 40	8536	ISO 40A TP	820.00	4/48
GM V IT 63	8536	ISO 63A TP	963.00	4/48
GM V IT 100	8536	ISO 100A TP	1199.00	4/48

Isolator 'TP' 40A -100A.
Utilization category AC 22A.
Switching device - Disconnectors to make, carry & break circuit current



ISOLATOR

CODE	HSN CODE	ITEM	MRP ₹	STD./ MST. PKG.
FOUR POLE (FP)				
GM V IF 40	8536	ISO 40A FP	1040.00	3/36
GM V IF 63	8536	ISO 63A FP	1150.00	3/36
GM V IF 100	8536	ISO 100A FP	1429.00	3/36

Isolator 'FP' 40A -100A.
Utilization category AC 22A.
Switching device - Disconnectors to make, carry & break circuit current
Conforms to IS / IEC 60947-3,
240V / 415V, AC, 50 Hz

CODE	HSN CODE	ITEM	MRP ₹	STD./ MST. PKG.
DOUBLE POLE (DP)				
GM V R030D 025	8536	RCCB 25A DP (30 mA)	2226.00	6/48
GM V R030D 040	8536	RCCB 40A DP (30 mA)	2300.00	6/48
GM V R030D 063	8536	RCCB 63A DP (30 mA)	3045.00	6/48
GM V R100D 025	8536	RCCB 25A DP (100 mA)	2310.00	6/48
GM V R100D 040	8536	RCCB 40A DP (100 mA)	2363.00	6/48
GM V R100D 063	8536	RCCB 63A DP (100 mA)	3098.00	6/48
GM V R300D 025	8536	RCCB 25A DP (300 mA)	2415.00	6/48
GM V R300D 040	8536	RCCB 40A DP (300 mA)	2468.00	6/48
GM V R300D 063	8536	RCCB 63A DP (300 mA)	3150.00	6/48

RCCB 'FP' AC Type 25A -63A
In accordance with IS 12640 (Part-1) &
IEC 61008 - 1, 240 / 415V, AC, 50Hz with
6kA Short circuit with stand capacity

CODE	HSN CODE	ITEM	MRP ₹	STD./ MST. PKG.
FOUR POLE (FP)				
GM V R030F 025	8536	RCCB 25A FP (30 mA)	2657.00	3/24
GM V R030F 040	8536	RCCB 40A FP (30 mA)	2830.00	3/24
GM V R030F 063	8536	RCCB 63A FP (30 mA)	3203.00	3/24
GM V R100F 025	8536	RCCB 25A FP (100 mA)	2688.00	3/24
GM V R100F 040	8536	RCCB 40A FP (100 mA)	2751.00	3/24
GM V R100F 063	8536	RCCB 63A FP (100 mA)	3255.00	3/24
GM V R300F 025	8536	RCCB 25A FP (300 mA)	2793.00	3/24
GM V R300F 040	8536	RCCB 40A FP (300 mA)	2888.00	3/24
GM V R300F 063	8536	RCCB 63A FP (300 mA)	3308.00	3/24

RCCB 'FP' AC Type 25A -63A
In accordance with IS 12640 (Part-1) &
IEC 61008 - 1, 240 / 415V, AC, 50Hz with
6kA Short circuit with stand capacity

CODE	HSN CODE	ITEM	MRP ₹	STD./ MST. PKG.
MCB CHANGEOVER SWITCH - 2 POLE				
GM COS D 25	8536	COS 25A DP	1018.00	6/72
GM COS D 40	8536	COS 40A DP	1375.00	6/72
GM COS D 63	8536	COS 63A DP	1705.00	6/72

COS 'DP' 25A -63A.
Utilization category AC 22A.
Switching device - Two way
changeover with center OFF

CODE	HSN CODE	ITEM	MRP ₹	STD./ MST. PKG.
MCB CHANGEOVER SWITCH - 4 POLE				
GM COS F 25	8536	COS 25A FP	1991.00	3/36
GM COS F 40	8536	COS 40A FP	2937.00	3/36
GM COS F 63	8536	COS 63A FP	3542.00	3/36

COS 'FP' 25A -63A.
Utilization category AC 22A.
Switching device - Two way
changeover with center OFF
Conforms to IS/ IEC 60947-3,
240V/415V, AC, 50Hz

RCCB



RCCB



COS



COS



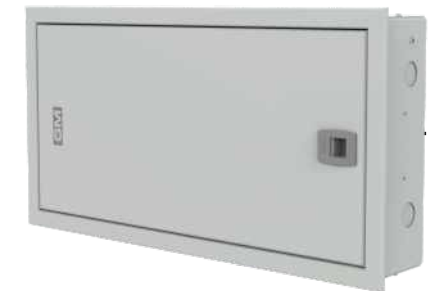


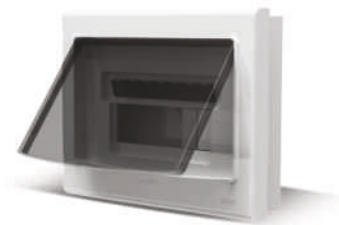
PRO SERIES

PRO SERIES

CODE	HSN CODE	ITEM	MRP ₹	STD./ MST. PKG.
SPN DISTRIBUTION BOARD - DOUBLE DOOR (METAL) NEW				
GM V 0710	8537	4 WAYS (2+2)	1810.00	1/12
GM V 0711	8537	6 WAYS (2+4)	2068.00	1/10
GM V 0712	8537	8 WAYS (2+6)	2233.00	1/8
GM V 0713	8537	12 WAYS (2+10)	2794.00	1/6
GM V 0714	8537	16 WAYS (2+14)	3328.00	1/4
Protection IP 43, IK 09 made of Steel Sheet (Phosphatised & RAL-9003 powder coated) with Din rail, wire set kit, Shrouded neutral link, insulated bus bar, earth link and also with High integrity, Clean Earth kit as accessory for electronic / IT installation to meet international safety standards. DB is designed with Deep drawn & PAN assembly. MCB not included				
TPN DISTRIBUTION BOARD - DOUBLE DOOR (METAL) NEW				
GM V 0715	8537	4 WAYS (2+2)	3443.00	1/4
GM V 0716	8537	6 WAYS (2+4)	4697.00	1/3
GM V 0717	8537	8 WAYS (2+6)	5731.00	1/2
GM V 0718	8537	12 WAYS (2+10)	8261.00	1/1
GM V 0719	8537	16 WAYS (2+14)	10989.00	1/1
Protection IP 43, IK 09 made of Steel Sheet (Phosphatised & RAL-9003 powder coated) with Din rail, wire set kit, Shrouded neutral link, insulated bus bar, earth link and also with High integrity, Clean Earth kit as accessory for electronic / IT installation to meet international safety standards. DB is designed with Deep drawn & PAN assembly.				
Reference specifications : IS 13032 / IS 8623 / IEC / BS EN 60439-3 MCB not included				
SPN DISTRIBUTION BOARD - DOUBLE DOOR (METAL)				
GM V 0720	8537	4 WAYS (2+2)	1573.00	1/12
GM V 0721	8537	6 WAYS (2+4)	1799.00	1/10
GM V 0722	8537	8 WAYS (2+6)	1942.00	1/8
GM V 0723	8537	12 WAYS (2+10)	2431.00	1/6
GM V 0724	8537	16 WAYS (2+14)	2893.00	1/4
Protection IP 43, IK 09 made of Steel Sheet (Phosphatised & RAL-7035 powder coated) with Din rail, Shrouded neutral link, insulated bus bar, earth link and also with High integrity, Clean Earth kit as accessory for electronic / IT installation to meet international safety standards. DB is designed with Deep drawn & PAN assembly. MCB not included				
TPN DISTRIBUTION BOARD - DOUBLE DOOR (METAL)				
GM V 0725	8537	4 WAYS (4+12)	3443.00	1/4
GM V 0726	8537	6 WAYS (8+18)	4697.00	1/3
GM V 0727	8537	8 WAYS (8+24)	5731.00	1/2
GM V 0728	8537	12 WAYS (8+36)	8261.00	1/1
GM V 0729	8537	16 WAYS (8+48)	10989.00	1/1
Protection IP 43, IK 09 made of Steel Sheet (Phosphatised & RAL-7035 powder coated) with Din rail, Shrouded neutral link, insulated bus bar, earth link. Suitable for flush mounting & surface mounting with door earthing & Provision for FP MCB/ISOLATOR/RCCB/RCBO as incomer & SP MCBs as outgoing with 100A copper bus bar for each phase. DB is designed with Deep drawn and PAN assembly.				
Reference specifications : IS 13032 / IS 8623 / IEC / BS EN 60439-3 MCB not included				

CODE	HSN CODE	ITEM	MRP ₹	STD./ MST. PKG.
SPN DISTRIBUTION BOARD - TV TEL NEW				
GM V 0730	8537	6 WAY SPN TV TEL	3025.00	1/4
GM V 0731	8537	8 WAY SPN TV TEL	3520.00	1/4
GM V 0732	8537	12 WAY SPN TV TEL	4290.00	1/4
GM V 0733	8537	16 WAY SPN TV TEL	5610.00	1/4
TPN DISTRIBUTION BOARD - TV TEL NEW				
GM V 0734	8537	6 WAY TPN TV/TEL	7150.00	1/1
GM V 0735	8537	8 WAY TPN TV/TEL	7590.00	1/1
GM V 0736	8537	12 WAY TPN TV/TEL	8690.00	1/1
VTPN DISTRIBUTION BOARD NEW				
GM V 0737	8537	4 WAY VTPN MCB IC	9790.00	1/1
GM V 0738	8537	6 WAY VTPN MCB IC	11660.00	1/1
GM V 0739	8537	8 WAY VTPN MCB IC	12430.00	1/1
GM V 0740	8537	12 WAY VTPN MCB IC	16060.00	1/1
GM V 0741	8537	16 WAY VTPN MCB IC	19690.00	1/1
AUTOMATIC CHANGEOVER SWITCH NEW				
GM V 0742	8536	32A, 240V~ 2 POLE	1975.00	1/8
32A DP MCB WITH ENCLOSURE NEW				
GM V 0743	8536	32A DP MCB WITH ENCLOSURE	450.00	5/120





CODE	HSN CODE	ITEM	MRP ₹	STD./ MST. PKG.
SPN DISTRIBUTION BOARD - PLASTIC BASE				
GM 0606	8537	5 - 7 Ways	1145.00	1/16
GM 0607	8537	7 - 9 Ways	1418.00	1/16
GM 0608	8537	10 - 12 Ways	1628.00	1/10
GM 0609	8537	14 - 16 Ways	2237.00	1/10
GM 0610	8537	17 - 19 Ways	2499.00	1/10

Fireproof plastic with transparent Grey cover spring loaded [door] swings open by just pressing the lock

CODE	HSN CODE	ITEM	MRP ₹	STD./ MST. PKG.
SPN DISTRIBUTION BOARD - METAL BASE				
GM 0611	8537	5 - 7 WAYS	1418.00	1/10
GM 0612	8537	7 - 9 WAYS	1701.00	1/10
GM 0613	8537	10 - 12 WAYS	2048.00	1/6
GM 0614	8537	14 - 16 WAYS	2468.00	1/6
GM 0615	8537	17 - 19 WAYS	2856.00	1/6

Fireproof plastic with transparent Grey cover spring loaded [door] swings open by just pressing the lock

Reference specifications :
IS 13032 / IS 8623 / IEC / BS EN 60439-3

CODE	HSN CODE	ITEM	MRP ₹	STD./ MST. PKG.
SPN DISTRIBUTION BOARD - SINGLE DOOR (METAL)				
GM 0616	8537	4 WAYS (2+2)	1166.00	1/6
GM 0617	8537	8 WAYS (2+6)	1485.00	1/5
GM 0618	8537	12 WAYS (2+10)	1771.00	1/4
GM 0619	8537	16 WAYS (2+14)	2217.00	1/4

Protection IP 20, IK 08 made of Steel Sheet (Phosphatised & powder coated) with Din rail, Shrouded neutral link, insulated bus bar, earth link and also with High integrity, Clean Earth kit as accessory for electronic / IT installation to meet international safety standards. DB is designed with Deep drawn & PAN assembly.

MCB not included

CODE	HSN CODE	ITEM	MRP ₹	STD./ MST. PKG.
SPN DISTRIBUTION BOARD - DOUBLE DOOR (METAL)				
GM 0620	8537	6 WAYS (2+4)	1760.00	1/6
GM 0621	8537	10 WAYS (2+8)	2310.00	1/5
GM 0622	8537	14 WAYS (2+12)	2805.00	1/4
GM 0623	8537	18 WAYS (2+16)	3245.00	1/4

Protection IP 43, IK 09 made of Steel Sheet (Phosphatised & powder coated) with Din rail, Shrouded neutral link, insulated bus bar, earth link and also with High integrity, Clean Earth kit as accessory for electronic / IT installation to meet international safety standards. DB is designed with Deep drawn & PAN assembly.

MCB not included

CODE	HSN CODE	ITEM	MRP ₹	STD./ MST. PKG.
TPN DISTRIBUTION BOARD - DOUBLE DOOR (METAL)				
GM 0624	8537	4 WAYS (8+12)	4004.00	1/4
GM 0625	8537	6 WAYS (8+18)	4961.00	1/3
GM 0626	8537	8 WAYS (8+24)	5940.00	1/2
GM 0627	8537	12 WAYS (8+36)	8712.00	1/1

Protection IP 43, IK 09 made of Steel Sheet (Phosphatised & powder coated) with Din rail, Shrouded neutral link, insulated bus bar, earth link. Suitable for flush mounting & surface mounting with door earthing & Provision for FP MCB/ ISOLATOR/RCCB/RCBO as incomer & SP MCBs as outgoing with 100A copper bus bar for each phase. DB is designed with Deep drawn and PAN assembly.

Reference specifications :
IS 13032 / IS 8623 / IEC / BS EN 60439-3
MCB not included





CODE	HSN CODE	ITEM	MRP ₹	STD./ MST. PKG.
PHASE SELECTOR DB-DOUBLE DOOR (WITHOUT ROTARY SWITCH)				
GM 0628	8537	4 Ways (8+12)	9240.00	1/1
GM 0629	8537	6 Ways (8+18)	9460.00	1/1
GM 0630	8537	8 Ways (8+24)	10010.00	1/1
GM 0631	8537	12 Ways (8+36)	14080.00	1/1
Protection IP 42, IK 09 made of Steel Sheet (Phosphatised & powder coated) with Din rail, shrouded neutral link, insulated bus bar, earth link & cable ties for cable management Suitable for flush mounting & surface mounting with door earthing & provision for FP MCB / ISOLATOR / RCCB / RCBO as incomer and SP MCBs as outgoing with 100A copper bus bar for each phase. DB is designed with ample space for wiring and Pan assembly. (Provision for mounting phase selector switches and piano indicator switches without wiring)				
MCB not included				
PHASE SELECTOR DB - DOUBLE DOOR (WITH ROTARY SWITCH)				
GM 0632	8537	4 Ways (8+12) -40A	11979.00	1/1
GM 0633	8537	6 Ways (8+18) -40A	12221.00	1/1
GM 0634	8537	8 Ways (8+24) -40A	12705.00	1/1
GM 0635	8537	12 Ways (8+36) -40A	17303.00	1/1
Protection IP 42, IK 09 made of Steel Sheet (Phosphatised & powder coated) with Din rail, shrouded neutral link, insulated bus bar, earth link & cable ties for cable management Suitable for flush mounting & surface mounting with door earthing & provision for FP MCB / ISOLATOR / RCCB / RCBO as incomer and SP MCBs as outgoing with 100A copper bus bar for each phase. DB is designed with ample space for wiring and Pan assembly. (Provision for mounting phase selector switches and piano indicator switches without wiring)				
MCB not included				
PHASE SELECTOR DB - DOUBLE DOOR (WITH ROTARY SWITCH)				
GM 0636	8537	4 Ways (8+12) -63A	12463.00	1/1
GM 0637	8537	6 Ways (8+18) -63A	12584.00	1/1
GM 0638	8537	8 Ways (8+24) -63A	12980.00	1/1
GM 0639	8537	12 Ways (8+36) -63A	16885.00	1/1
Protection IP 42, IK 09 made of Steel Sheet (Phosphatised & powder coated) with Din rail, shrouded neutral link, insulated bus bar, earth link & cable ties for cable management Suitable for flush mounting & surface mounting with door earthing & provision for FP MCB / ISOLATOR / RCCB / RCBO as incomer and SP MCBs as outgoing with 100A copper bus bar for each phase. DB is designed with ample space for wiring and Pan assembly. (Provision for mounting phase selector switches and piano indicator switches without wiring)				
Reference specifications : IS 13032 / IS 8623 / IEC / BS EN 60439-3				
MCB not included				

CODE	HSN CODE	ITEM	MRP ₹	STD./ MST. PKG.
SPN DISTRIBUTION BOARD - SINGLE DOOR (METAL)				
GM 0691	8536	3 Ways - 25A	413.00	1/40
GM 0692	8536	3 Ways - 32A	435.00	1/40
GM 0693	8536	3 Ways - 40A	754.00	1/40
GM 0694	8536	3 Ways - 63A	776.00	1/40
Modular construction Enhanced Life. High Reliability				
AC DB BOX WITH METAL CLAD PLUG AND SOCKET				
GM 0651	8537	Ovius AC DB Box With 20A Metal Clad Plug & Socket	682.00	1/24
GM 0652	8537	Xion AC DB Box With 20A Metal Clad Plug & Socket	682.00	1/24
GM 0653	8537	Nexline 1 Pole AC DB Box With 20A Metal Clad Plug & Socket	633.00	1/24
GM 0650	8537	Nexline 2 Pole AC DB Box With 20A Metal Clad Plug & Socket	682.00	1/24
GM 0827	8537	GHome 1 Pole Ac DB Box With 20a Metal Clad Plug & Socket	578.00	1/20
IP 30 protection. MCB not included. Temper proof seal. Reference standard IS 8623				
METAL CLAD PLUG AND SOCKET				
GM 0654	8536	2 P + E Plug (20 Amp)	143.00	1/140
GM 0657	8536	2 P + E Socket (20 Amp)	153.00	1/140
GM 0658	8536	3 P + E Plug (32 Amp)	341.00	1/50
GM 0659	8536	3 P + E Socket (32 Amp)	358.00	1/50
L.T. CONTROL REVERSE FORWARD SWITCH				
GM 0642	8536	16A / 415V Mini	435.00	1/30
GM 0640	8536	16A / 415V	490.00	1/30
GM 0641	8536	32A /415V	864.00	1/20



GM 0691 / 0692



GM 0693 / 0694



GM 0651



GM 0652



GM 0653



GM 0650



GM 0827



GM 0654 / 0657



GM 0658 / 0659



GM 0642



GM 0640



GM 0641



GM 0655 GM 0656



GM 0645 GM 0646



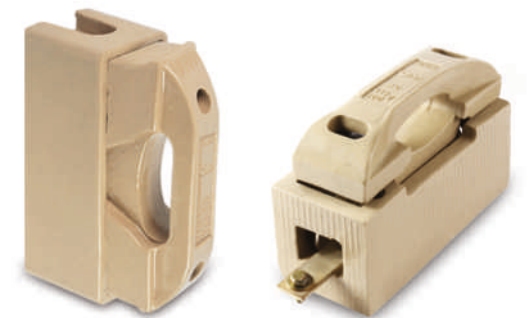
GM 0673 GM 0677



GM 0681 GM 0686

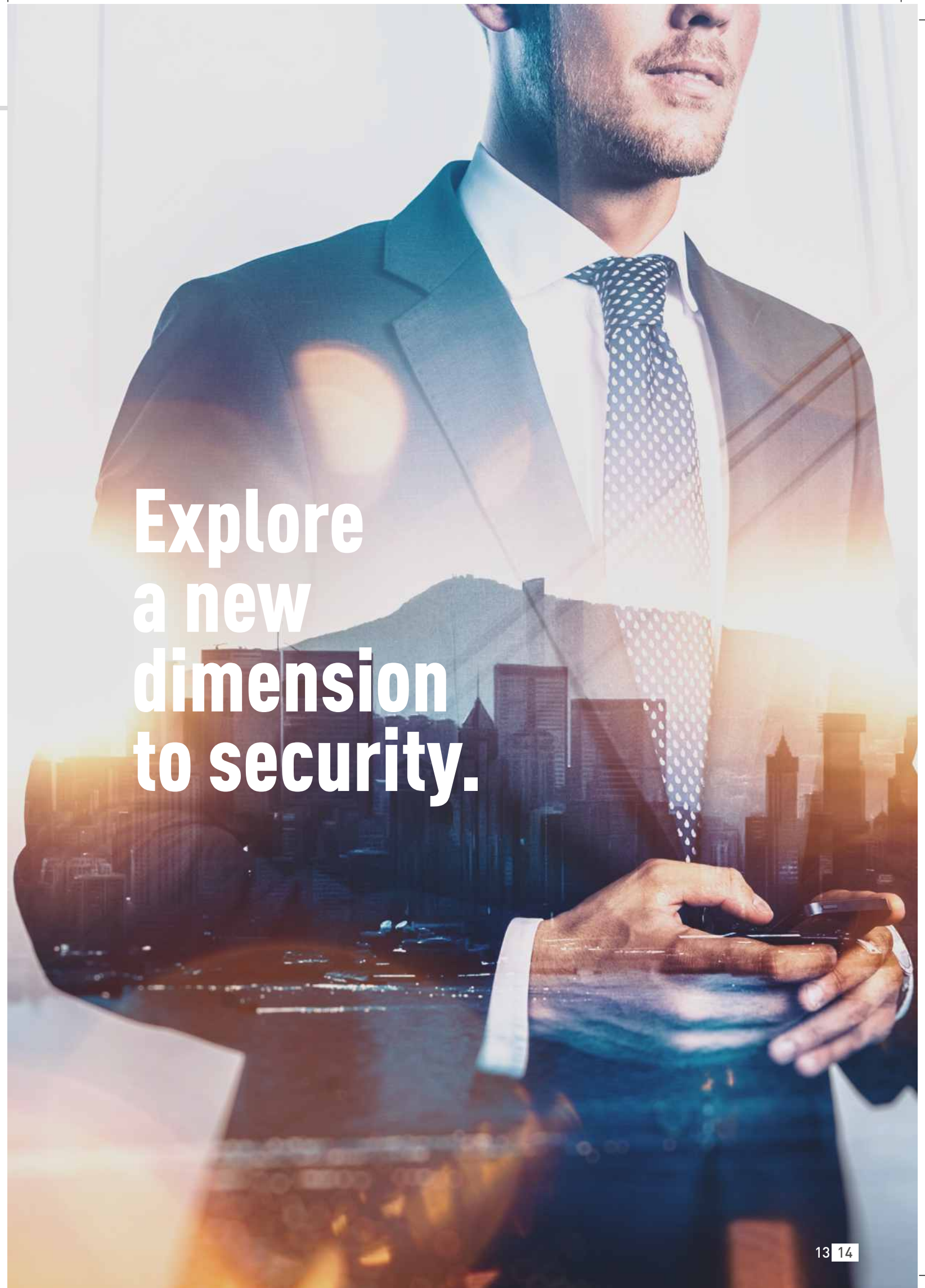
CODE	HSN CODE	ITEM	MRP ₹	STD./ MST. PKG.
MCB ENCLOSURE - PLASTIC				
GM 0655	8537	1-2 MCB Enclosure	72.00	1/120
GM 0656	8537	3-4 MCB Enclosure	103.00	1/120
IP 20 Protection. Temper proof seal. Reference standard IS 8623. MCB not included.				
MCB ENCLOSURE - METAL				
GM 0645	8537	1-2 MCB Enclosure	303.00	1/120
GM 0646	8537	3-4 MCB Enclosure	363.00	1/120
IP 20 Protection. Temper proof seal. Reference standard IS 8623. MCB not included.				
SWITCH FUSE UNIT (REWIRABLE)				
GM 0671	8536	16A / 240V - SPN	715.00	1/18
GM 0672	8536	16A / 240V - DP	732.00	1/18
GM 0673	8536	32A / 240V - SPN	1650.00	1/8
GM 0674	8536	32A / 240V - DP	1733.00	1/8
GM 0675	8536	16A / 415V - TP	1914.00	1/6
GM 0676	8536	32A / 415V - TP	2530.00	1/4
GM 0677	8536	63A / 415V - TP	5940.00	1/2
GM 0678	8536	100A / 415V - TP	10835.00	1/1
GM 0679	8536	200A / 415V - TP	16885.00	1/1
CHANGEOVER SWITCH (OFF LOAD)				
GM 0680	8536	16A / 240V - 2Pole	1260.00	1/12
GM 0681	8536	32A / 240V - 2Pole	1700.00	1/8
GM 0682	8536	16A / 415V - 3Pole	1788.00	1/8
GM 0683	8536	32A / 415V - 3Pole	2365.00	1/8
GM 0684	8536	63A / 415V - 3 Pole	1956.00	1/8
GM 0685	8536	32A / 415V - 4Pole	2684.00	1/4
GM 0686	8536	63A / 415V - 4Pole	6875.00	1/2
GM 0687	8536	100A / 415V - 4Pole	11440.00	1/1
GM 0688	8536	200A / 415V - 4Pole	21780.00	1/1
GM 0689	8536	300A / 415V - 4Pole	21104.00	1/1
GM 0690	8536	400A / 415V - 4Pole	27565.00	1/1
Switchgear enclosure made of Steel sheet [Phosphatised & powder coated] with Hard bright tin plated contacts for high conductivity & longer life. Quick make & break operating mechanism.				

CODE	HSN CODE	ITEM	MRP ₹	STD./ MST. PKG.
PORCELAIN FUSE UNIT (REWIRABLE)				
GM 0660	8536	16A / 240V Pilot	79.00	1/120
GM 0661	8536	16A / 415V Pilot	136.00	1/80
GM 0662	8536	32A / 415V (Excell)	233.00	1/45
GM 0663	8536	63A / 415V (Excell)	523.00	1/24
GM 0664	8536	100A / 415V (Excell)	1029.00	1/8
GM 0665	8536	200A / 415V (Excell)	1777.00	1/6
GM 0666	8536	300A / 415V with Lugs	2255.00	1/3
GM 0667	8536	500A / 415V with Lugs	3075.00	1/3
GM 0668	8536	32A / 415V Handle Type (Excell)	248.00	1/30
GM 0669	8536	63A / 415V Handle Type (Excell)	534.00	1/12
Reference standard: IS 2086				
PORCELAIN FUSE UNIT (REWIRABLE) - TURBO SERIES				
GM 0670	8536	63A / 415V Turbo	567.00	1/20
GM 0698	8536	100A / 415V Turbo	1166.00	1/12
GM 0699	8536	200A / 415V Turbo	2393.00	1/8
GM 0700	8536	200A / 415V with Lugs Turbo	2772.00	1/8
Reference standard: IS 2086				
CUT OUT - STEEL SHEET ENCLOSURE				
GM 0695	8536	32A / 415V	457.00	1/20
GM 0696	8536	63A / 415V	1117.00	1/6
GM 0697	8536	100A / 415V	1683.00	1/6





CODE	HSN CODE	ITEM	MRP ₹	STD./ MST. PKG.
FLEXI DISTRIBUTION BOARD				
				NEW
GM L 0501	8537	2 ROW 28 MODULE	5170.00	1/1
GM L 0502	8537	3 ROW 42 MODULE	6050.00	1/1
GM L 0503	8537	4 ROW 56 MODULE	6930.00	1/1
GM L 0504	8537	4 ROW 64 MODULE	7535.00	1/1
BUS BAR CHAMBER				
				NEW
GM L 0505	8536	32A / 415V	2723.00	1/4
GM L 0506	8536	63A / 415V	4455.00	1/3
GM L 0507	8536	100A / 415V	5390.00	1/3
GM L 0508	8536	200A / 415V	9295.00	1/2
GM L 0509	8536	320A / 415V	14410.00	1/2
GM L 0510	8536	400A / 415V	20240.00	1/2
GM L 0511	8536	630A / 415V	36080.00	1/1
KNIFE TYPE CHANGEOVER SWITCH				
				NEW
GM L 0512	8536	63A / 415V FP (Knife Type)	7480.00	1/3
GM L 0513	8536	100A / 415V FP (Knife Type)	12111.00	1/2
GM L 0514	8536	200A / 415V FP (Knife Type)	21901.00	1/1
GM L 0515	8536	320A / 415V FP (Knife Type)	25691.00	1/1
COMPACT CHANGEOVER SWITCH				
				NEW
GM L 0516	8536	32A DP Compact Changeover	1183.00	1/20
GM L 0517	8536	32A TP Compact Changeover	1265.00	1/20
GM L 0518	8536	32A FP Compact Changeover	1419.00	1/20



Explore
a new
dimension
to security.



Perfect blend of innovation and simplicity

MCBs & DBs

Its newly introduced features are rare and hard to find. It caters to your needs with utmost sincerity. It is unbelievably frugal and economical. A highlighting quality is that it is eco-friendly, which means that it causes no harm to the environment. It accommodates anywhere and everywhere, be it home, office or any outdoor premises.

G-HOME



MCB

CODE	HSN CODE	ITEM	MRP ₹	STD./ MST. PKG.
SINGLE POLE (SP) 'B' TYPE				
GM H SB 06	8536	MCB 6A SP B	185.00	10/200
GM H SB 10	8536	MCB 10A SP B	185.00	10/200
GM H SB 16	8536	MCB 16A SP B	185.00	10/200
GM H SB 20	8536	MCB 20A SP B	185.00	10/200
GM H SB 25	8536	MCB 25A SP B	185.00	10/200
GM H SB 32	8536	MCB 32A SP B	185.00	10/200
MCB 'SP' 'B' Curve Series 6A - 32A In accordance with IS/IEC 60898-1, 240/415V, AC, 50Hz, 10kA, Suitable for all domestic loads, Motor and other Inductive loads.				



MCB

CODE	HSN CODE	ITEM	MRP ₹	STD./ MST. PKG.
SINGLE POLE (SP) 'C' TYPE				
GM H SC 06	8536	MCB 6A SP C	185.00	10/200
GM H SC 10	8536	MCB 10A SP C	185.00	10/200
GM H SC 16	8536	MCB 16A SP C	185.00	10/200
GM H SC 20	8536	MCB 20A SP C	185.00	10/200
GM H SC 25	8536	MCB 25A SP C	185.00	10/200
GM H SC 32	8536	MCB 32A SP C	185.00	10/200
GM H SC 40	8536	MCB 40A SP C	309.00	10/200
GM H SC 63	8536	MCB 63A SP C	356.00	10/200
MCB 'SP' 'C' Curve Series 6A - 63A In accordance with IS/IEC 60898-1, 240/415V, AC, 50Hz, 10kA, Suitable for all domestic loads, Motor and other Inductive loads.				



MCB

CODE	HSN CODE	ITEM	MRP ₹	STD./ MST. PKG.
SINGLE POLE WITH NEUTRAL (SPN) 'C' TYPE				
GM H NC 06	8536	MCB 6A SPN C	444.00	6/120
GM H NC 10	8536	MCB 10A SPN C	444.00	6/120
GM H NC 16	8536	MCB 16A SPN C	444.00	6/120
GM H NC 20	8536	MCB 20A SPN C	444.00	6/120
GM H NC 25	8536	MCB 25A SPN C	444.00	6/120
GM H NC 32	8536	MCB 32A SPN C	444.00	6/120
GM H NC 40	8536	MCB 40A SPN C	612.00	6/120
GM H NC 63	8536	MCB 63A SPN C	719.00	6/120
MCB 'SPN' 'C' Curve Series 6A - 63A In accordance with IS/IEC 60898-1, 240/415V, AC, 50Hz, 10kA, Suitable for all domestic loads, Motor and other Inductive loads.				



MCB

CODE	HSN CODE	ITEM	MRP ₹	STD./ MST. PKG.
DOUBLE POLE (DP) 'C' TYPE				
GM H DC 06	8536	MCB 6A DP C	457.00	6/120
GM H DC 10	8536	MCB 10A DP C	457.00	6/120
GM H DC 16	8536	MCB 16A DP C	457.00	6/120
GM H DC 20	8536	MCB 20A DP C	457.00	6/120
GM H DC 25	8536	MCB 25A DP C	457.00	6/120
GM H DC 32	8536	MCB 32A DP C	457.00	6/120
GM H DC 40	8536	MCB 40A DP C	638.00	6/120
GM H DC 63	8536	MCB 63A DP C	751.00	6/120
MCB 'DP' 'C' Curve Series 6A - 63A In accordance with IS/IEC 60898-1, 240/415V, AC, 50Hz, 10kA, Suitable for all domestic loads, Motor and other Inductive loads.				

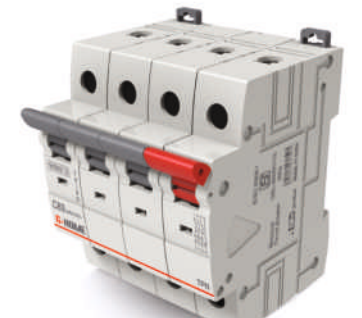
CODE	HSN CODE	ITEM	MRP ₹	STD./ MST. PKG.
TRIPLE POLE (TP) 'C' TYPE				
GM H TC 06	8536	MCB 6A TP C	747.00	4/80
GM H TC 10	8536	MCB 10A TP C	747.00	4/80
GM H TC 16	8536	MCB 16A TP C	747.00	4/80
GM H TC 20	8536	MCB 20A TP C	747.00	4/80
GM H TC 25	8536	MCB 25A TP C	747.00	4/80
GM H TC 32	8536	MCB 32A TP C	747.00	4/80
GM H TC 40	8536	MCB 40A TP C	1040.00	4/80
GM H TC 63	8536	MCB 63A TP C	1176.00	4/80
MCB 'TP' 'C' Curve Series 6A - 63A In accordance with IS/IEC 60898-1, 240/415V, AC, 50Hz, 10kA, Suitable for all domestic loads, Motor and other Inductive loads.				

MCB



CODE	HSN CODE	ITEM	MRP ₹	STD./ MST. PKG.
TRIPLE POLE WITH NEUTRAL (TPN) 'C' TYPE				
GM H RC 06	8536	MCB 6A TPN C	998.00	3/60
GM H RC 10	8536	MCB 10A TPN C	998.00	3/60
GM H RC 16	8536	MCB 16A TPN C	998.00	3/60
GM H RC 20	8536	MCB 20A TPN C	998.00	3/60
GM H RC 25	8536	MCB 25A TPN C	998.00	3/60
GM H RC 32	8536	MCB 32A TPN C	998.00	3/60
GM H RC 40	8536	MCB 40A TPN C	1307.00	3/60
GM H RC 63	8536	MCB 63A TPN C	1462.00	3/60
MCB 'TPN' 'C' Curve Series 6A - 63A In accordance with IS/IEC 60898-1, 240/415V, AC, 50Hz, 10kA, Suitable for all domestic loads, Motor and other Inductive loads.				

MCB



CODE	HSN CODE	ITEM	MRP ₹	STD./ MST. PKG.
FOUR POLE (FP) 'C' TYPE				
GM H FC 06	8536	MCB 6A FP C	1030.00	3/60
GM H FC 10	8536	MCB 10A FP C	1030.00	3/60
GM H FC 16	8536	MCB 16A FP C	1030.00	3/60
GM H FC 20	8536	MCB 20A FP C	1030.00	3/60
GM H FC 25	8536	MCB 25A FP C	1030.00	3/60
GM H FC 32	8536	MCB 32A FP C	1030.00	3/60
GM H FC 40	8536	MCB 40A FP C	1353.00	3/60
GM H FC 63	8536	MCB 63A FP C	1489.00	3/60
MCB 'FP' 'C' Curve Series 6A - 63A In accordance with IS/IEC 60898-1, 240/415V, AC, 50Hz, 10kA, Suitable for all domestic loads, Motor and other Inductive loads.				

MCB





ISOLATOR

CODE	HSN CODE	ITEM	MRP ₹	STD./ MST. PKG.
DOUBLE POLE (DP)				
GM H ID 40	8536	ISO 40A DP	341.00	6/120
GM H ID 63	8536	ISO 63A DP	418.00	6/120
GM H ID 80	8536	ISO 80A DP	NEW 605.00	6/120
GM H ID 100	8536	ISO 100A DP	616.00	6/120
GM H ID 125	8536	ISO 125A DP	NEW 748.00	6/120

Isolator 'TP' 40A - 125A.
Utilization category AC 22A.
Switching device - Disconnectors to make, carry & break circuit current



ISOLATOR

CODE	HSN CODE	ITEM	MRP ₹	STD./ MST. PKG.
TRIPLE POLE (TP)				
GM H IT 40	8536	ISO 40A TP	539.00	4/80
GM H IT 63	8536	ISO 63A TP	649.00	4/80
GM H IT 80	8536	ISO 80A TP	NEW 858.00	4/80
GM H IT 100	8536	ISO 100A TP	869.00	4/80
GM H IT 125	8536	ISO 125A TP	NEW 897.00	4/80

Isolator 'TP' 40A - 125A.
Utilization category AC 22A.
Switching device - Disconnectors to make, carry & break circuit current



ISOLATOR

CODE	HSN CODE	ITEM	MRP ₹	STD./ MST. PKG.
FOUR POLE (FP)				
GM H IF 40	8536	ISO 40A FP	743.00	3/60
GM H IF 63	8536	ISO 63A FP	853.00	3/60
GM H IF 80	8536	ISO 80A FP	NEW 952.00	3/60
GM H IF 100	8536	ISO 100A FP	963.00	3/60
GM H IF 125	8536	ISO 125A FP	NEW 1199.00	3/60

Isolator 'FP' 40A - 125A.
Utilization category AC 22A.
Switching device - Disconnectors to make, carry & break circuit current
Conforms to IS/IEC 60947-3,
240V/ 415V, AC, 50Hz

CODE	HSN CODE	ITEM	MRP ₹	STD./ MST. PKG.
DOUBLE POLE (DP)				
GM H R030D 025	8536	RCCB 25A DP (30 mA)	1869.00	6/48
GM H R030D 040	8536	RCCB 40A DP (30 mA)	1974.00	6/48
GM H R030D 063	8536	RCCB 63A DP (30 mA)	2394.00	6/48
GM H R100D 025	8536	RCCB 25A DP (100 mA)	1901.00	6/48
GM H R100D 040	8536	RCCB 40A DP (100 mA)	2006.00	6/48
GM H R100D 063	8536	RCCB 63A DP (100 mA)	2111.00	6/48
GM H R300D 025	8536	RCCB 25A DP (300 mA)	1932.00	6/48
GM H R300D 040	8536	RCCB 40A DP (300 mA)	2037.00	6/48
GM H R300D 063	8536	RCCB 63A DP (300 mA)	2499.00	6/48

RCCB



RCCB 'DP' AC Type 25A - 63A
In accordance with IS 12640 (Part-1) & IEC 61008 - 1, 240 / 415V, AC, 50Hz with 6kA Short circuit with stand capacity

CODE	HSN CODE	ITEM	MRP ₹	STD./ MST. PKG.
FOUR POLE (FP)				
GM H R030F 025	8536	RCCB 25A FP (30 mA)	2384.00	3/24
GM H R030F 040	8536	RCCB 40A FP (30 mA)	2489.00	3/24
GM H R030F 063	8536	RCCB 63A FP (30 mA)	2594.00	3/24
GM H R100F 025	8536	RCCB 25A FP (100 mA)	2468.00	3/24
GM H R100F 040	8536	RCCB 40A FP (100 mA)	2573.00	3/24
GM H R100F 063	8536	RCCB 63A FP (100 mA)	2730.00	3/24
GM H R300F 025	8536	RCCB 25A FP (300 mA)	2709.00	3/24
GM H R300F 040	8536	RCCB 40A FP (300 mA)	2814.00	3/24
GM H R300F 063	8536	RCCB 63A FP (300 mA)	2888.00	3/24

RCCB



RCCB 'FP' AC Type 25A - 63A
In accordance with IS 12640 (Part-1) & IEC 61008 - 1, 240 / 415V, AC, 50Hz with 6kA Short circuit with stand capacity



CODE	HSN CODE	ITEM	MRP ₹	STD./ MST. PKG.
MCB CHANGEOVER SWITCH - DOUBLE POLE (DP) NEW				
GM H COS D25	8536	COS 25A DP	775.00	6/72
GM H COS D40	8536	COS 40A DP	850.00	6/72
GM H COS D63	8536	COS 63A DP	1075.00	6/72
		COS 'DP' 25A -63A. Utilization category AC 22A. Switching device - Two way changeover with center OFF		
MCB CHANGEOVER SWITCH - FOUR POLE (FP) NEW				
GM H COS F25	8536	COS 25A FP	1525.00	3/36
GM H COS F40	8536	COS 40A FP	1600.00	3/36
GM H COS F63	8536	COS 63A FP	1850.00	3/36
		COS 'FP' 25A -63A. Utilization category AC 22A. Switching device - Two way changeover with center OFF Conforms to IS/ IEC 60947-3, 240V/415V, AC, 50Hz		
MCB ENCLOSURE - METAL NEW				
GM 0814	8537	1-2 MCB Enclosure	225.00	1/120
GM 0815	8537	3-4 MCB Enclosure	295.00	1/120

CODE	HSN CODE	ITEM	MRP ₹	STD./ MST. PKG.
SPN DISTRIBUTION BOARD - DOUBLE DOOR (METAL) NEW				
GM 0816	8537	4 - WAYS (2+2)	1075.00	1/12
GM 0817	8537	6 - WAYS (2+4)	1282.00	1/12
GM 0818	8537	8 - WAYS (2+6)	1649.00	1/10
GM 0819	8537	12 - WAYS (2+10)	2156.00	1/8
GM 0820	8537	16 - WAYS (2+14)	2558.00	1/6
		Protection IP 43, IK 09 made of Steel Sheet (Phosphatised & RAL-9002 powder coated) with Din rail, neutral link, bus bar & earth link. Suitable for flush mounting & surface mounting with door earthing. DB is designed with Deep drawn & Pan assembly. MCB not included		
TPN DISTRIBUTION BOARD - DOUBLE DOOR (METAL)				
GM 0823	8537	4 WAYS (4+12)	3080.00	1/4
GM 0824	8537	6 WAYS (8+18)	3922.00	1/3
GM 0825	8537	8 WAYS (8+24)	4411.00	1/3
GM 0826	8537	12 WAYS (8+36)	6369.00	1/2
		Protection IP 43, IK 09 made of Steel Sheet (Phosphatised & RAL-9002 powder coated) with Din rail, neutral link, bus bar, earth link. Suitable for flush mounting & surface mounting with door earthing & Provision for FP MCB / ISOLATOR / RCCB / RCBO as incomer & SP MCBs as outgoing with 63A copper bus. bar for each phase. DB is designed with Deep drawn and PAN assembly. Reference specifications : IS 13032 / IS 8623 / IEC / BS EN 60439-3 MCB not included		





Our exclusive experience centres

INDIA

Mumbai
Andheri
 G-6, Laxmi Industrial Estate,
 Opp. Laxmi Chhaya Hotel,
 New Link Road, Andheri (W),
 Mumbai - 400 053, Maharashtra.
 Email: info@gmmodular.com
 Contact: +918879918221.

Lohar Chawl
 Shop No.1 Plot No. 151/153,
 Bhabha Building, Lohar Chawl,
 Mumbai - 400 002, Maharashtra.
 Email: info@gmmodular.com
 Contact: 022 2206 6545.

Bengaluru
 460/ 20/ 1, 30th Cross,
 8th B Main Road, 4th Block,
 Beside Jain Temple, Jayanagar,
 Bengaluru - 560 011, Karnataka.
 Email: info@gmmodular.com
 Contact: 080 4097 1188.

Belgaum
 Shop No. 571, Bhati Tower,
 Patil Galli, Belgaum - 590 001,
 Karnataka.
 Email: info@gmmodular.com
 Contact: +91 99453 33107.

Hyderabad
 No. 5-5-84/87, Shop No. 2&3,
 Kalpakunj Apartment, Jambaug,
 Hyderabad - 500 012, Telangana.
 Email: info@gmmodular.com
 Contact: 040 2473 4545.

Vijayawada
 Shop no: 15 -18, K. S Vyas Complex,
 Opp. Indira Gandhi Municipal Stadium,
 MG Road, Vijayawada - 520 010,
 Andhra Pradesh.
 Email: info@gmmodular.com
 Contact: +91 86624 99945

Jalore
 Near Kanchangiri Jain Temple,
 Opp. Haridev Joshi Circle,
 Bagoda Road, Jalore - 343 001,
 Rajasthan.
 Email: info@gmmodular.com
 Contact: 02973-222288
 +91 79769 79283

Bhilwara
 G-4, Govindram Commercial Hub,
 Old RTO Road, Bhilwara - 311 001,
 Rajasthan.
 Email: info@gmmodular.com
 Contact: +91 89550 48560

Calicut

GM Avenue, 2nd Floor,
 Red Cross Road,
 Calicut 673 032, Kerala.
 Email: info@gmmodular.com
 Contact: 049 5277 3500.

Noida

C-161, Sector 63,
 Near Hindustan Times Office,
 Noida, Uttar Pradesh-201301
 Email: info@gmmodular.com
 Contact: 0120-4562087.

Kolkata

39/40, Ezra Street, Ground Floor,
 Kolkata - 700 001, West Bengal.
 Email: info@gmmodular.com
 Contact: +91 33406 02048.

Ranchi

Mahavir Chowk, Upper Bazar,
 Ranchi - 834 001, Jharkhand.
 Email: info@gmmodular.com
 Contact: 065 1355 1309
 +91 94715 55599.

Tirunelveli

48, Raja Building,
 Tirunelveli - 627 001,
 Tamil Nadu.
 Email: info@gmmodular.com
 Contact: +91 94431 51008.

Coimbatore

22, Mill Road, Below ICICI Bank,
 Coimbatore - 641 001,
 Tamil Nadu.
 Email: info@gmmodular.com
 Contact: +91 99523 07025.

Puducherry

No. 298, J.N. Street,
 Opp. to Sony Centre Showroom,
 Puducherry - 605001,
 Email: info@gmmodular.com
 Contact: 04134500222.

UAE

Dubai
 GMM Electricals LLC.,
 Al Owais Business Tower,
 Mezzanine Floor, Shop No-14,
 Baniyas Street, Deira-Dubai, UAE.
 Email: vishal.kothari@gmmodular.com
 Contact: +971503786596

SPAIN

Madrid
 GMM Electric Europe S.A.
 Calle Valdeon 28,
 28947 Fuenlabrada. Madrid (Spain)
 Contact Number: +34 677 62 09 45
 Email Address: info@gmmelectric.com
 Website: www.gmmodular.es

To make a better world, make life simpler.

It is what we strongly believe in. It is not just about innovating products, it's about everything we do that affects people and environment around us. We find us responsible to do things differently and in a better way. These are few initiatives we have already set into motion.

CLIMATE IMPACT

GM Modular supports the Climate Impact cause. We want to help carve a better cleaner world and that is why we started a strategic policy initiative. We are committed to align operations and strategies with environment friendly principles.

RECYCLE

We constantly find ways to make more out of less. That is why we try our best to use a recyclable resource. From tiny metal pieces to whatever that can harm the environment in reproducing, we reuse it.

LESS TRANSPORT

We have regional distribution centres spread across the country. In order to reduce the distance that our products have to travel to reach our customers, we have distribution centres with our channel partners to cut down on the transportation distance that helps curb CO2 emissions.

BETTER HOME ENVIRONMENT

A good home environment is important for your health and well-being. It is not only the ventilation and construction materials, but also the things you have inside, that influence the indoor environment of your home. GM refrains from using any harmful raw material that may cause unhealthy circumstances to life.

CERTIFIED

To help consumers make qualified decisions in choosing products that contribute to a healthy lifestyle, GM products have received safety certifications from around the world, as they have been tested thoroughly with regards to their functioning.

Harmonizing design and technology

The GM product range sets standards in design, function and technique. GM offers high-quality design, attractive colours and numerous intelligent functions with switches and automation. Our intent is to raise the quality of life and therefore, all products are designed to harmonize perfectly, with each other. From switches to socket outlets, from music technology to home automation, the use of GM products is not only attractive, but also convincingly comfortable. Having clear operating instructions in our packaging with the most important technical data assists in the safe and faultless installation of every GM product.